

Flights

EVERYONE'S FAVOURITE SEASONAL EXCITEMENT! WE HAVE A NEW ROUND COMING TO YOU FOR THE PERFECT WAY TO CELEBRATE THE SUMMER WITH US!



THE CAFE FLIGHTS

THE SWEET ICED TEA FLIGHT

RASPBERRY GREEN
COCONUT JASMINE
PINEAPPLE ORANGE
RHUBARB EARL GREY
VANILLA WILDBERRY

PICK 3 | 15

MAKE IT BOOZY | 7.50

THE COLD BREW FLIGHT

STRAWBERRY RHUBARB
VANILLA ROSE
BUTTERSCOTCH
DRAGONFRUIT
COCONUT

PICK 3 | 17



THE SANDWICH FLIGHT

CUCUMBER DILL
NOT PB & J
TUNA MELT
CRANBERRY TURKEY
CLUB

PICK 3 | 20

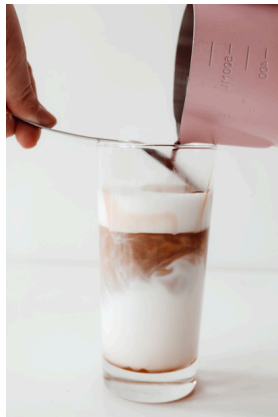
THE MARGARITA FLIGHT

PINA COLADA
RHUBARB ROSE
WATERMELON MINT
BLUE RASPBERRY
SPICY MANGO

PICK 3 | 20



Cafe Drinks



HOT BEVERAGES

ESPRESSO	4 4 1/2
BREWED	3 1/2 4
AMERICANO	4
AMERICANO MISTO	4 3/4 5 1/4
LATTE	5 1/2 6 1/2
CAPPUCCINO	5 1/2 6 1/4
FLAT WHITE	5 1/2
CARAMEL MACCHIATTO	6 1/4 7
MOCHA	5 1/2 6 1/4
WHITE MOCHA	6 1/4 7
CHAI LATTE	5 1/2 6 1/4
MATCHA LATTE	6 1/4 7 1/4
TEA LATTE	5 1/2 6 1/4
RHUBARB FOG	6 1/4 7
HOT CHOCOLATE	5 1/4 6

COLD BEVERAGES

SPECIALTY LEMONADE	7 1/4
COLD BREW	5 1/2
MOCKTAILS	7 1/4 - 8 1/2
ANY OF OUR CAFE BEVERAGES CAN BE MADE ICED	

FLAVOUR SHOTS

RHUBARB	VANILLA	LAVENDER
CARAMEL	PEPPERMINT	PINEAPPLE
COCONUT	RASPBERRY	ROSE
TOASTED MARSHMALLOW		
SHOTS +3/4		

SUGAR - FREE OPTIONS AVAILABLE

ALT. MILK OPTIONS

OAT, SOY, LACTOSE FREE

+1

Food

ON OR BETWEEN BREAD

*SUPPLIED BY ARTISANAL SOURDOUGH BAKER,
EATS BY COLE

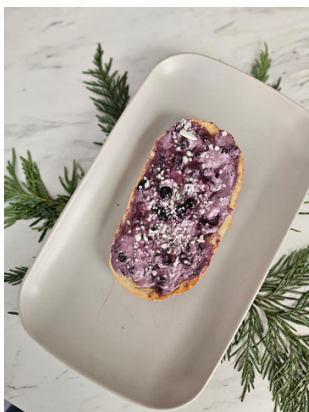
BAGELS

CREAM CHEESE | 7 1/4

DILL CREAM CHEESE & SMOKED SALMON | 11 1/4

EGG & CHEESE | 11 1/4

+ ADD GREENS | 1 3/4



SANDWICHES'

CAPRESE GRILLED CHEESE | 11 1/4

MEET BARB - ROTATING | 11 1/4

TOAST

NOT A PB&J

nut-free sunflower
butter & house-made
rhubarb chia jam

WILD BERRY

wild blueberry cream
cheese topped
with feta & honey

BANANA CHAI

cinnamon butter topped
with banana & chai spice

ROAST PUMPKIN

chipotle pumpkin spread
topped with feta, pumpkin
seeds, & tahini

8

EXTRA EATS

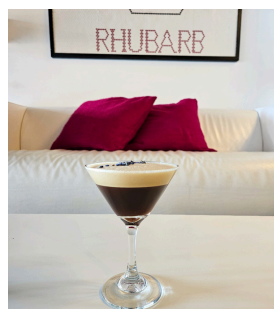
DAILY PASTRY SELECTION
YOGHURT PARFAIT
ASK US FOR MORE DETAILS

Espresso Martinis



SALTED CARAMEL

SALTED CARAMEL SYRUP, ESPRESSO, VODKA, BAILEYS
15 | 2oz



LAVENDER

LAVENDER, ESPRESSO, GIN, KALUHA
15 | 2oz

DIRTY CHAI

CHAI SYRUP, SIMPLE SYRUP, ESPRESSO, VODKA, BAILEYS,
15 | 2oz



ORANGE CREAMSICLE

ORANGE LIQUEUR, SIMPLE SYRUP, ESPRESSO
15 | 2oz

THE CLASSIC

ESPRESSO, SIMPLE SYRUP, KALUHA, VODKA
15 | 2oz

CHOCOLATE COVERED STRAWBERRY

STRAWBERRY SYRUP, ESPRESSO, CREME DE CACAO, VODKA,
15 | 2oz

Cocktails



THE RHUBARB

PISCO, FINO SHERRY, LEMON JUICE, RHUBARB SYRUP, ORANGE BLOSSOM WATER & EGG WHITE
16 | 2oz



YELLOW DAY

GIN, ST. GERMAIN LIQUEUR, LEMON JUICE, GRAPEFRUIT SYRUP, TURMERIC TINCTURE TOPPED WITH BLANC DE BLANC
16 | 2oz

PALM OF MY HAND

COCONUT TEQUILA, PLANTATION 3 STARS WHITE RUM, LIME JUICE, CASHEW ORGEAT, CUCUMBER & ROSE WATER
15 | 2oz



GOLDEN HOUR

ROSEMARY-INFUSED BOURBON, GINGER LIQUEUR, AVERNA, LEMON JUICE, SIMPLE SYRUP & PINEAPPLE
15 | 2.5oz

Cocktails

HEART OF DARKNESS

MEZCAL, SAGE INFUSED CAMPARI, CYNAR, NUTTY SOLERA SHERRY
& BANANE DU BRESIL
16 | 3oz



CHIMNEY SWEEP

JOHNNIE WALKER BLACK LABEL, ARTIST'S BLEND SCOTCH, BONAL,
CREME DE CASSIS, PLUM & ROOTBEER BITTERS & CLOVE SMOKE
16 | 3oz



DISARONO PEAR

DISARONO, PEAR SYRUP, LEMON & SODA
16 | 3oz



GIN FIZZ

CHAMBORD, GIN, CREAM, LIME,
EGG WHITE, TOPPED WITH SODA
14 1/2 | 2OZ

RHUBARB MULE

CHAMBORD, GIN, CREAM, LIME, EGG WHITE, TOPPED WITH SODA
14 1/2 | 2OZ